



FMIP Polyclonal Antibody

Catalog No	YP-Ab-03875
Isotype	IgG
Reactivity	Human;Mouse;Rat
Applications	WB;IHC;IF;ELISA
Gene Name	THOC5
Protein Name	THO complex subunit 5 homolog
Immunogen	The antiserum was produced against synthesized peptide derived from human THOC5. AA range:561-610
Specificity	FMIP Polyclonal Antibody detects endogenous levels of FMIP protein.
Formulation	Liquid in PBS containing 50% glycerol, 0.5% BSA and 0.02% sodium azide.
Source	Polyclonal, Rabbit,IgG
Purification	The antibody was affinity-purified from rabbit antiserum by affinity-chromatography using epitope-specific immunogen.
Dilution	WB: 1/500 - 1/2000. IHC: 1/100 - 1/300. ELISA: 1/20000.. IF 1:50-200
Concentration	1 mg/ml
Purity	≥90%
Storage Stability	-20°C/1 year
Synonyms	THOC5; C22orf19; KIAA0983; THO complex subunit 5 homolog; Functional spliceosome-associated protein 79; fSAP79; NF2/meningioma region protein pK1.3; Placental protein 39.2; PP39.2; hTREX90
Observed Band	78kD
Cell Pathway	Nucleus . Cytoplasm . Shuttles between nucleus and cytoplasm. .
Tissue Specificity	Ubiquitously expressed.
Function	function:May be involved in the differentiation of granulocytes and adipocytes.,PTM:Phosphorylated on tyrosine upon binding to activated CSF1R; which causes a dissociation of the two proteins. Phosphorylation on Ser-5 and/or Ser-6 is required for nuclear export. Phosphorylated on Thr-328 in insulin-stimulated adipocytes (By similarity). Phosphorylated upon DNA damage, probably by ATM or ATR.,similarity:Belongs to the THOC5 family.,subcellular location:Shuttles between nucleus and cytoplasm.,subunit:Interacts with phosphorylated CSF1R.,tissue specificity:Ubiquitously expressed.,
Background	function:May be involved in the differentiation of granulocytes and adipocytes.,PTM:Phosphorylated on tyrosine upon binding to activated CSF1R; which causes a dissociation of the two proteins. Phosphorylation on Ser-5 and/or Ser-6 is required for nuclear export. Phosphorylated on Thr-328 in



insulin-stimulated adipocytes (By similarity). Phosphorylated upon DNA damage, probably by ATM or ATR.,similarity:Belongs to the THOC5 family.,subcellular location:Shuttles between nucleus and cytoplasm.,subunit:Interacts with phosphorylated CSF1R.,tissue specificity:Ubiquitously expressed.,

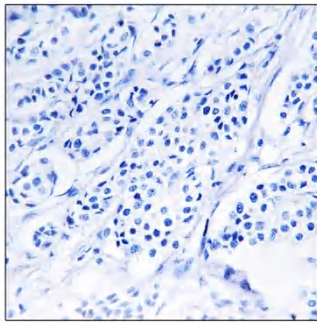
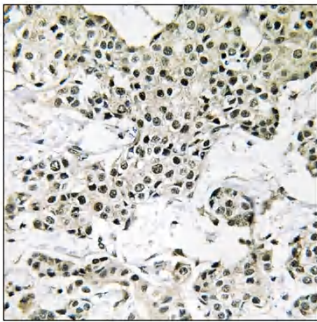
matters needing attention

Avoid repeated freezing and thawing!

Usage suggestions

This product can be used in immunological reaction related experiments. For more information, please consult technical personnel.

Products Images



Immunohistochemistry analysis of paraffin-embedded human breast carcinoma tissue, using THOC5 Antibody. The picture on the right is blocked with the synthesized peptide.